

POWERFUL TRUCKS



ZHEJIANG HANGCHA IMP. &EXP. CO., LTD.

Factory site: 666 Xiangfu Road,
Hangzhou, Zhejiang, China (311305)

Tel: +86-571-88926735 88926755
Fax: +86-571-88926789 88132890

sales@hcforklift.com
www.hcforklift.com



Follow us on
Facebook



Follow us on
YouTube



Follow us on
WeChat



Download "Hangcha
Forklift" App



HANGCHA GROUP CO., LTD. reserves the right to make any changes without notice concerning colors, equipment, or specifications detailed in this brochure, or to discontinue individual models. The colors of trucks, delivered may differ slightly from those in brochures.

2020 VERSION 2/COPYRIGHT 2020/09



STAGE V
CERTIFIED

X Series Heavy IC Forklift Trucks

with capacities of 14,000 to 18,000kg



The World of Hangcha

X SERIES HEAVY IC FORKLIFT TRUCKS

The heavy load X series is extension of the new series of internal combustion counterbalance forklift truck developed by Hangcha independently, adopting the world advanced technologies based on the original products. Through the comprehensive upgrading of appearance molding, energy conservation, environmental protection, comfort, security and reliability, it will become the world-class forklift truck which can meet your overall demands.

CHARACTERISTICS

The truck has professional and entirely-new appearance, has great identifiable degree, has simple and smooth profiling and has great industrial aesthetics. The exposed parts are arranged in concealed manner, and the appearance is more concise.

The key parts are products of internationally well-known brands, have been utilized in the products of previous models, have been validated by the market, and are reliable and durable; The modular and standard design is applicable, the main parts are validated in advance and by steps, the truck has great maturity.



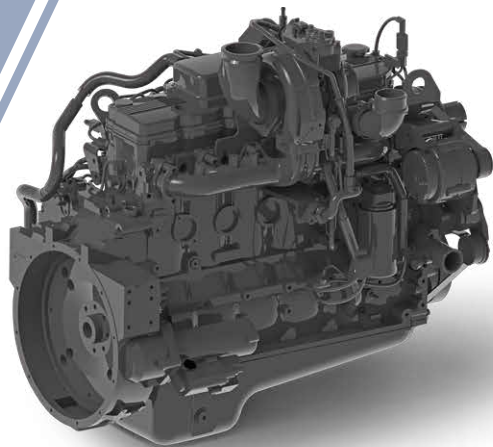
Easy/ Efficiency/ Economy



STAGE V & TIER 4F

HANGCHA with you at every stage
Efficient, reliable solutions for your demands

With Hangcha you can meet all Stage V/Tier 4f emissions standards which provides customer demands for value, innovation and performance. The technologies include common rail fuel systems, Turbocharged Inter-cooled selective catalytic reduction (SCR), diesel oxidation catalysts (DOC) and diesel particulate filters (DPF). Designed and optimised to every engine model, our forklift truck maximises efficiency and reliability.



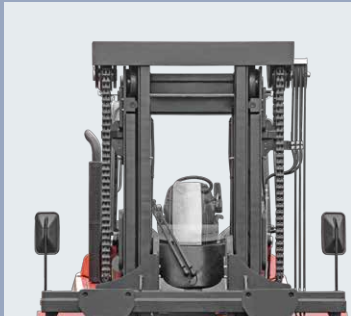
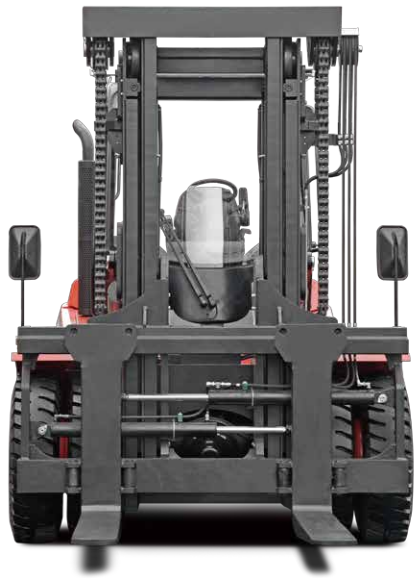
CUMMINS B6.7

High Performance

The performance is improved. The travel speed and lift speed are improved by 10%-20%. The body of the truck is reduced, and the flexibility is strengthened. Thanks to CAE (Computer Aided Engineering) technology, structural components are more balanced.

Comfort

With the new-style fully-suspended and overall-view cab. The profile of the truck is optimized; The vision is more excellent. The interior ornaments are formed, feeling is more comfortable; Shaped steel tube integral frame provides high strength and better sealing.



Excellent all round visibility is achieved by the overall design.



Thanks to the unique design, cab can be tilt without any tools, major service items can be reached easily by tilting the cabin, maximized access is possible.



Optional imaging system with front and rear camera, increasing the safety greatly.



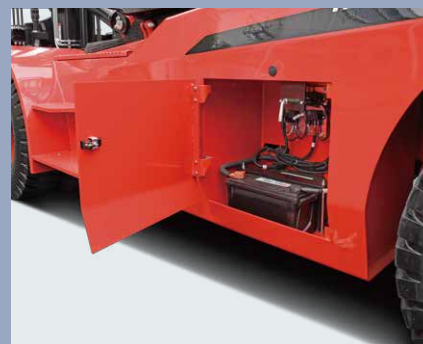
ZF gear box with micro-electronic control provides for three-shift power shifting, travelling is stable and accurate.



Load sensing hydraulics provide high efficiency and energy saving, reducing hydraulic oil working temperature and also extending the life of hydraulic components and seals.



Anti-slip pedal provides high safety and easy maintenance.



Battery compartment is easy to open for easy maintenance.



The newly designed LCD instrument has more comprehensive functions and more stable performance. It can display the important information such as truck status and engine faults... So that the operator can understand the truck status more intuitively and facilitate maintenance.



Suspended seat with fingertip system that can be easily adjusted to suit each customer.



KESSLER heavy-duty traction axle, two-stage deceleration; Wet brake, maintenance-free; Hydraulic release spring action parking brake, safe and reliable.



Standard Specification

- / Duplex mast
- / Single control lever - Fork position operation
- / Cooling/heating air-conditioner
- / Fully-hydraulic power steering
- / Quadruple multi-way valve
- / OPS system
- / Adjustable steering column
- / Tip-over oil circuit self-lock valve
- / Lifting speed limit valve
- / High-position exhaust
- / Traction device
- / Power-off switch
- / Reversing radar
- / CAN-bus structure indicator
- / LED lamps
- / Pneumatic tyre
- / Reversing buzzer
- / Snail horn
- / Manual tilting cab
- / Adjustable armrest
- / Tools

Options

- / Customer color
- / Special forks
- / Portals of other specifications
- / Solid tyre
- / On-board interphone
- / Audible warning reverse alarm
- / Alarm lamp
- / Video monitoring system
- / Spark extinguisher
- / Fire extinguisher (2kg/4kg)
- / Automatic fire extinguishing device
- / LED work lamp
- / Four-circuit driving recording system
- / Speed limit device
- / Blue lamp
- / Weighing system
- / Air pre-filter
- / Electrostatic conduction chain
- / Fan
- / Electro-hydraulic tilting cab

Reliability

Increased digitization, additional central controller, CAN-bus structure, built-in multiple diagnostic, management functions and fault alarm are convenient for diagnosis.

Precise Operation

Integrated fingertip system, pilot control, smart and accurate; Hydraulic brake curve optimization, smooth and easy control.



X Series 14-18t Diesel Counterbalanced Trucks

Distinguishing mark	1.1	Manufacturer		HANGCHA GROUP CO.,LTD.																					
	1.2	Manufacturer's type designation		CPCD140-XRW85G		CPCD140-XRH9G		CPCD140-XRAW85G		CPCD140-XRAH9G		CPCD160-XRW85G		CPCD160-XRH9G		CPCD180-XRW85G		CPCD160-XRAW25G		CPCD160-XRAH9G		CPCD180-XRW25G		CPCD180-XRH9G	
	1.3	Drive: electric (battery or mains), diesel, petrol, fuel gas		Diesel				Diesel				Diesel				Diesel		Diesel				Diesel			
	1.4	Operator type: hand, pedestrian, standing, seated, order-picker		Seated				Seated				Seated				Seated		Seated				Seated			
	1.5	Rated capacity/rated load	Q (kg)	14000				14000				16000				16000		16000				18000			
	1.6	Load centre distance	c (mm)	900				1200				900				600		1200				900			
	1.8	Load distance, centre of drive axle to fork	x (mm)	920				920				920				920		940				940			
1.9	Wheelbase	y (mm)	3650				3650				3650				3650		3750				3750				
Weight	2.1	Service Weight	kg	20500				22100				21500				20900		24300	24500	24200		24400			
Tyres, chassis	3.1	Tyres: solid rubber, superelastic, pneumatic, polyurethane		Pneumatic				Pneumatic				Pneumatic				Pneumatic		Pneumatic				Pneumatic			
	3.2	Tyre size, front		12.00-20-20PR				12.00-20-20PR				12.00-20-20PR				12.00-20-20PR		12.00-24-20PR				12.00-24-20PR			
	3.3	Tyre size, rear		12.00-20-20PR				12.00-20-20PR				12.00-20-20PR				12.00-20-20PR		12.00-24-20PR				12.00-24-20PR			
Dimensions	3.5	Wheels, number front / rear (x = driven wheels)		4*/2				4*/2				4*/2				4*/2		4*/2				4*/2			
	3.6	Tread, front	b10 (mm)	1894				1894				1894				1894		2013				2013			
	3.7	Tread, rear	b11 (mm)	2030				2030				2030				2030		2200				2200			
	4.1	Tilt of mast/fork carriage forward/backward	α/β(°)	6/12				6/12				6/12				6/12		6/12				6/12			
	4.2	Height, mast lowered	h1 (mm)	3300				3300				3300				3300		3400				3400			
	4.3	Free lift	h2 (mm)	90				95				90				90		110				110			
	4.4	Lift	h3 (mm)	3000				3000				3000				3000		3000				3000			
	4.5	Height, mast extended	h4 (mm)	4800				4800				4800				4800		4900				4900			
	4.7	Height of overhead cabin	h6 (mm)	3300				3300				3300				3300		3360				3360			
	4.8	Seat height relating to SIP	h7 (mm)	2010				2010				2010				2010		2070				2070			
	4.12	Coupling height	h10 (mm)	550				550				550				550		600				600			
	4.19	Overall length	l1 (mm)	7270				7910				7270				6970		8030				8030			
	4.20	Length to face of forks	l2 (mm)	5470				5470				5470				5470		5590				5590			
	4.21	Overall width	b1/b2/(mm)	2580/2320				2580/2320				2580/2320				2580/2320		2700/2500				2700/2500			
	4.22	Fork dimensions	s/e/l (mm)	90×250×1800				95×250×2440				90×250×1800				90×250×1500		110×250×2440				110×250×1820			
	4.24	Fork-carriage width	b3 (mm)	2510				2510				2510				2510		2640				2640			
	4.25	Distance between fork-arms	b5 (mm)	750/2300				750/2300				750/2300				750/2300		750/2400				750/2400			
	4.31	Ground clearance, laden, below mast	m1 (mm)	250				250				250				250		250				250			
	4.32	Ground clearance, centre of wheelbase	m2 (mm)	325				325				325				325		370				370			
	4.34.1	Aisle width with load length 1800mm	Ast (mm)	7870				8510				7870				7870		8040				8040			
4.34.2	Aisle width with load length 2400mm	Ast (mm)	8470				8510				8470				8470		8640				8640				
4.35	Turning radius	Wa (mm)	4950				4950				4950				4950		5100				5100				
4.36	Minimum pivoting point distance	b13 (mm)	1800				1800				1800				1800		1800				1800				
Performance data	5.1	Travel speed, laden/unladen	km/h	30/26				30/26				30/26				30/26		28/27				28/26			
	5.2	Lift speed, laden/unladen	m/s	0.4/0.35				0.4/0.35				0.4/0.35				0.38/0.33		0.40/0.35				0.37/0.32			
	5.3	Lowering speed, laden/unladen	m/s	0.38/0.35				0.38/0.35				0.38/0.35				0.38/0.35		0.36/0.33				0.36/0.33			
	5.5	Drawbar pull, laden/unladen	N	150000/75000				150000/75000				150000/75000				150000/75000		125000/65000				125000/65000			
	5.7	Gradeability, laden/unladen	%	28/-				28/-				28/-				28/-		25/-				25/-			
5.10	Service brake		Wet disc brake				Wet disc brake				Wet disc brake				Wet disc brake		Wet disc brake				Wet disc brake				
	Parking brake		spring applied, hydraulic release multi-disc brake				spring applied, hydraulic release multi-disc brake				spring applied, hydraulic release multi-disc brake				spring applied, hydraulic release multi-disc brake		spring applied, hydraulic release multi-disc brake				spring applied, hydraulic release multi-disc brake				
Combustion-engine	7.1	Engine manufacturer/type		CUMMINS/QSB6.7-173		CUMMINS/B6.7		CUMMINS/QSB6.7-173		CUMMINS/B6.7		CUMMINS/QSB6.7-173		CUMMINS/B6.7		CUMMINS/QSB6.7-C190		CUMMINS/B6.7		CUMMINS/QSB6.7-C190		CUMMINS/B6.7			
		Emission STD		Stage 3A/Tier 3		Stage V/Tier 4		Stage 3A/Tier 3		Stage V/Tier 4		Stage 3A/Tier 3		Stage V/Tier 4		Stage 3A/Tier 3		Stage V/Tier 4		Stage 3A/Tier 3		Stage V/Tier 4			
	7.2	Engine power	kW	129		149		129		149		129		149		129		142		149		142		149	
	7.3	Rated speed	r/min	2200		2200		2200		2200		2200		2200		2200		2300		2200		2300		2200	
	7.4	Number of cylinders/displacement	(-)/(cm ³)	6/6700		6/6700		6/6700		6/6700		6/6700		6/6700		6/6700		6/6700		6/6700		6/6700		6/6700	
	7.9	Vehicle electrical system voltage	V	24		24		24		24		24		24		24		24		24		24		24	
	7.10	Battery voltage/nominal capacity	V/Ah	2x12/120		2x12/120		2x12/120		2x12/120		2x12/120		2x12/120		2x12/120		2x12/120		2x12/120		2x12/120		2x12/120	
		Rated torque	Nm/r/min	799/1400		990/1300		799/1400		990/1300		799/1400		990/1300		799/1400		930/1500		990/1300		930/1500		990/1300	
		Transmissions Manufacturer		ZF		ZF		ZF		ZF		ZF		ZF		ZF		ZF		ZF		ZF		ZF	
		Transmissions Type		3WG161		3WG161		3WG161		3WG161		3WG161		3WG161		3WG161		3WG171		3WG171		3WG171		3WG171	
Addition data		Stage FWD/RVS		3/3		3/3		3/3		3/3		3/3		3/3		3/3		3/3		3/3		3/3		3/3	
	10.1	Operating pressure for attachments	bar	250		250		250		250		250		250		250		250		250		250		250	
	10.2	Oil volume for attachments	l/min	265		265		265		265		265		265		265		265		265		265		265	
	10.3	Hydraulic Tank - capacity (drain & refill)	liter	320		320		320		320		320		320		360		360		360		360		360	
	10.4	Fuel tank capacity	liter	320		280		320		280		320		280		320		360		320		360		320	
	10.7	Sound pressure level at the driver's seat	dB (A)	78		78		78		78		78		78		78		78		78		78		78	

14-18t X series mast:(Pneumatic)

Type	Model	Max. fork height	Overall height				Tilt Range	Capacity			
			Lowered		Extended			Load capacity at 900mm	Load capacity at 1200mm	Load capacity at 900/1200mm	Load capacity at 600/900mm
			16t/1200	Others	16t/1200	Others	F/R				
		mm	mm	mm	mm	mm	(°)	kg	kg	kg	kg
Wide view mast	CXR140/141/160/X180/163/180M300	3000	3400	3300	4900	4800	6/12	14000	14000	16000	18000
	CXR140/141/160/X180/163/180M330	3300	3550	3450	5200	5100	6/12	14000	14000	16000	18000
	CXR140/141/160/X180/163/180M360	3600	3700	3600	5500	5400	6/12	14000	14000	16000	18000
	CXR140/141/160/X180/163/180M400	4000	3900	3800	5900	5800	6/12	14000	14000	16000	18000
	CXR140/141/160/X180/163/180M430	4300	4100	4000	6250	6150	6/12	14000	14000	16000	18000
	CXR140/141/160/X180/163/180M450	4500	4200	4100	6450	6350	6/12	14000	14000	16000	18000
	CXR140/141/160/X180/163/180M480	4800	4350	4250	6750	6650	6/6	14000	14000	16000	18000
	CXR140/141/160/X180/163/180M500	5000	4450	4350	6950	6850	6/6	14000	14000	16000	18000
	CXR140/141/160/X180/163/180M550	5500	4750	4650	7500	7400	3/6	12500	12500	14500	16500
	CXR140/141/160/X180/163/180M600	6000	5000	4900	8000	7900	3/6	11000	11000	13000	15000
CXR140/141/160/X180/163/180M650	6500	5300	5200	8550	8450	3/6	9500	9500	11500	13500	

Capacity kg

(kg)

